

Leather processing systems

Designed by **dose**

dosemat VG

laboratory and experimental drum

The proven testing and small volume production drum with an unique float circulation system manufactured in stainless steel.

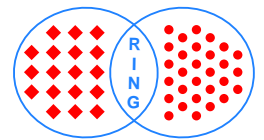


Leather is fascinating timeless fashion. To design new products is expensive. The dosemat VG provides production conditions on laboratory scale and helps to make new developments sure of success.



Ring Maschinenbau GmbH
Niederlassung
Industriestraße 5
D-77839 Lichtenau

Phone: +49-7227-5060
Fax: +49-7227-2189
Email: info@dose.eu



Leather processing systems
Designed by **doje**

dosemat VG

laboratory and experimental drum

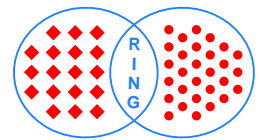
Dosemat VG employs an intelligent float circulation design and ensures an excellent reptile leather.



Several times per round circulates the float across the drum scoops through the mixing box where dosing occurs.

The design of the drum scoops and their positioning over the entire drum width ensures a uniform treatment of the leather.



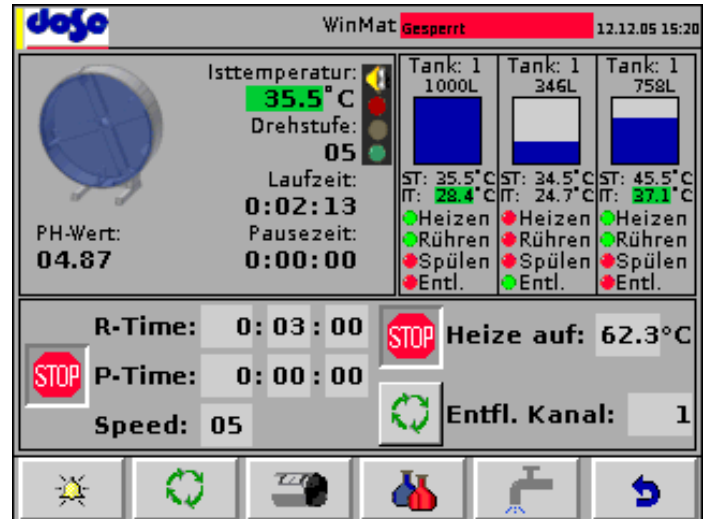


Leather processing systems
Designed by **dojo**

dosemat VG

laboratory and experimental drum

Temperature and drum running times are easily controlled with the iPC system.
The speed control works with a 10 step speed regulation.

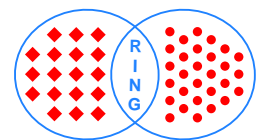


The drum is manufactured in stainless steel and the front side is covered with plexiglass (optional tempered glass).

Loading/unloading, rinsing and washing takes place by the sliding door with a perforated section.

Admixtures are fast and simply made by the extra front funnel.





Leather processing systems
Designed by **doje**

dosemat VG

laboratory and experimental drum

Features ranging from comprehensive innovations to a fully-automatic system enables you to meet even the most difficult requirements.



Chemical tanks with automatic dosing



Mixing box with draining and steam connection



VG drive, draining pipe and central lubrication



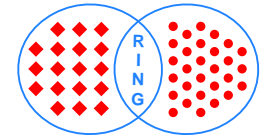
Gear wheel drive on a robust long life steel girder

Dosemat VG options:

- Integrated recipe and process management system
- Chemical tank with automatic dosing
- pH value control
- Water mixing and dosing system
- Signal lamp
- Additional preparation tank

dosemat VG

laboratory and experimental drum



Leather processing systems
Designed by **dose**



number	30215	30220	30231	30239	30245	30257	30268	30276	30292	30316	30321	30326	30340
drum diameter (mm)	800	800	1000	1000	1200	1200	1200	1400	1400	1650	1650	1650	1850
drum width (mm)	300	400	400	500	400	500	600	500	600	750	1000	1250	1500
drum volume (liter)	150	200	315	390	450	565	680	769	920	1600	2100	2600	4000
minimal float (liter)	3	4	4	5	5	6	6	6	7	10	15	20	35
shaved weight (kg)	15	20	32	40	46	58	70	78	92	160	200	260	400
drum speed (rpm)	8/40	8/40	7/35	7/35	6/30	6/30	6/30	5/25	5/25	4/20	4/20	4/20	4/20
motor power (kW)	0.75	0.75	1.1	1.1	1.5	1.5	1.5	2.2	2.2	4	5.5	7.5	9.2
heating (kW)	3.6	3.6	3.6	3.6	3.6	3.6	3.6	3.6	3.6	steam	steam	steam	steam