

Leather processing systems

Designed by **dose**

dose VGI

laboratory and experimental drum

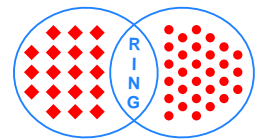
The dose VGI has been specially designed for laboratory use and has set the standard for decades in leather research.

Chemical industry, institutes and tanneries value the efficiency and productiveness of this unit.



Ring Maschinenbau GmbH
Niederlassung
Industriestraße 5
D-77839 Lichtenau

Phone: +49-7227-5060
Fax: +49-7227-2189
Email: info@dose.eu



Leather processing systems

Designed by **dose**

dose VGI

laboratory and experimental drum

Testing conditions are exact scaleable to the production drums:
The qualification for the transferability of testing results.



An exceeding fact of this testing drum type is the indirect heating system. Separated from the float, the heating circuit circulates in a double mantle drum casing.

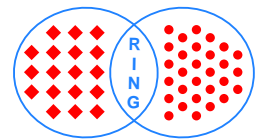
The heating system works without any float, as a consequence heated drying processes can be realized.



Dose VGI drive and heating system



Table model drive and heating system



Leather processing systems

Designed by **dose**

dose VGI

laboratory and experimental drum

Features ranging from comprehensive innovations to a fully-automatic system enables you to meet even the most difficult requirements.



The drum is manufactured in stainless steel and the front side is covered with plexiglass (optional tempered glass).

Loading/unloading, rinsing and washing takes place by the sliding door with a perforated section.

Admixtures are fast and simply made by the extra front funnel.



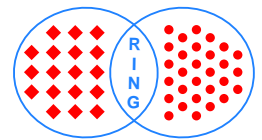
Table model sliding door



Drum safety guard and iPC



Gear wheel drive on a robust steel girder



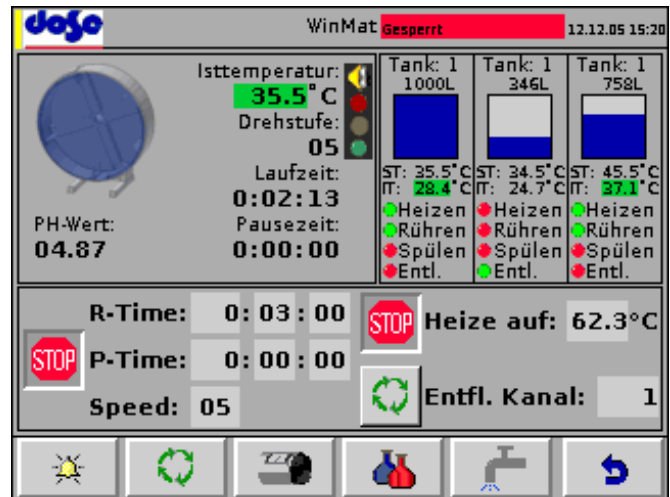
Leather processing systems

Designed by **dose**

dose VGI

laboratory and experimental drum

Temperature and drum running times are easily controlled with the iPC system. The speed control works with a 10 step speed regulation.



Water mixing and dosing system



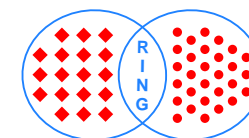
Chemical tank with automatic dosing

Dose VGI options:

- Integrated recipe and process management system
- Chemical tank with automatic dosing
- pH value control
- Water mixing and dosing system
- CE safety guard
- Signal lamp
- Additional preparation tanks

dose VGI

laboratory and experimental drum



Leather processing systems

Designed by **dose**



Model No.	30503	30508	30509	30515	30520	30531	30539	30545	30557	30568	30576	30592
Diameter Ø (mm)	400	600	600	800	800	1000	1000	1200	1200	1200	1400	1400
Length (mm)	200	300	300	300	400	400	500	400	500	600	500	600
Volume (liter)	25	85	85	150	200	315	390	450	565	680	769	920
Shaved weight (kg)	2	7	7	12	16	25	32	36	45	54	62	74
Speed (rpm)	5/50	8/40	8/40	8/40	8/40	7/35	7/35	6/30	6/30	6/30	5/25	5/25
Motor power (kw)	0.1	0.22	0.55	0.75	0.75	1.1	1.1	1.5	1.5	1.5	2.2	2.2
Heating power (kw)	1	2	3	3	3	4.5	4.5	4.5	4.5	4.5	6	6